



OAKFIELD



Caroline Way, Eastbourne  
£1,400 Per Calendar Month





# SUMMARY

---

This lovely two-bedroom flat in Caroline Way, Eastbourne, can fully furnished and ready to move into. It's in a great spot at Sovereign Harbour, just a short stroll from the marina, cafes, restaurants, and shops – perfect for enjoying coastal living. Also available part or unfurnished!

Inside, the flat has a bright and open feel, with a spacious living and dining area that leads out onto a private balcony – ideal for relaxing with a coffee or enjoying the fresh sea air. The kitchen comes fully equipped with everything you need, and both bedrooms are a good size, with the main bedroom offering an ensuite. The bathroom is modern and well-finished, and the flat also includes an allocated parking space.

This flat offers comfort, convenience, and a great location.

Please note:

The tenancy will begin with a 12 month initial term



An annual household income of £42,000  
per annum

Negotiable furniture to include all seen in  
photos.

Appliances include:

- Fridge
- Freezer
- Washing Machine
- Dishwasher
- Oven
- Hob
- Microwave





## Lounge/Diner

22'11" x 13'9"

## Bedroom 1

12'9" x 11'9"

## Bedroom 2

11'9" x 10'5"

## Bathroom

6'6" x 6'2"

## Ensuite

8'2" x 4'3"

Council Tax Band D - £2,532.49 Per Annum























# INFORMATION

---

## Tenure

## Local Authority

Eastbourne Borough Council

## Council Tax Band

**D**

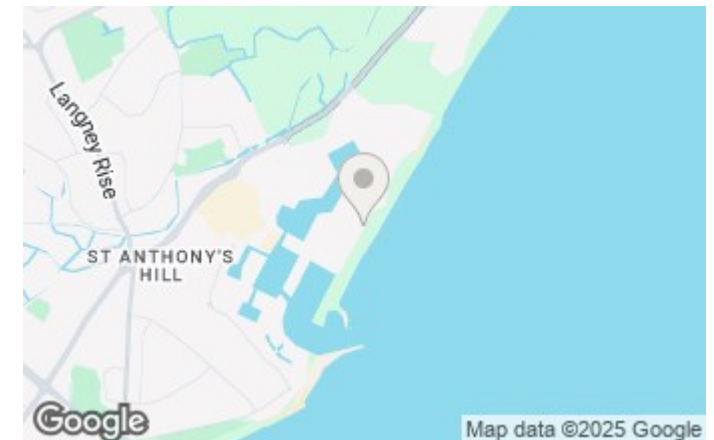
## Opening Hours

Monday to Friday	9.00am - 5.30pm
Saturday	9.00am - 4.00pm

## Viewings

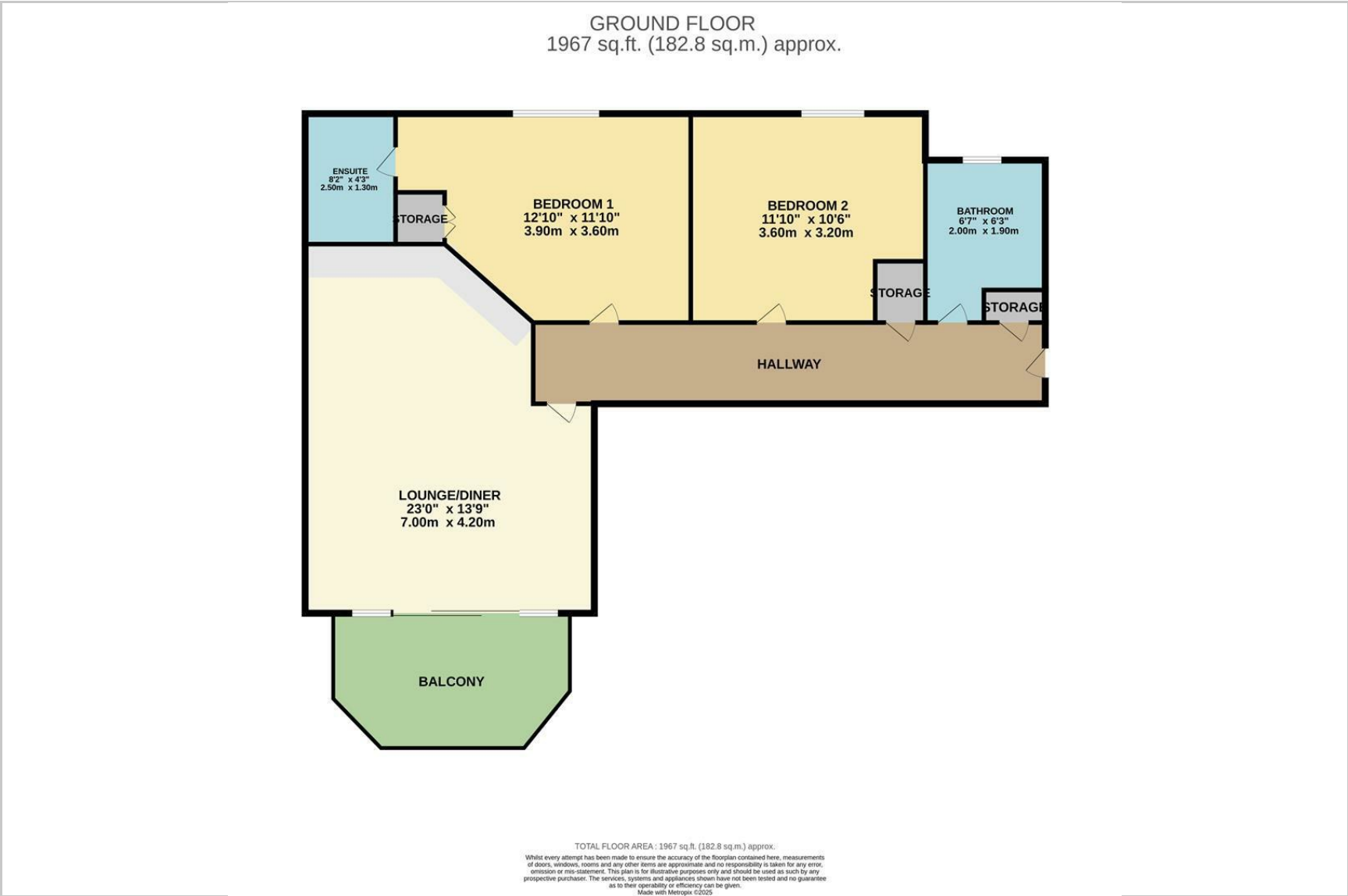
Please contact us on 01323 405553 if you wish to arrange a viewing appointment for this property or require further information.

## Area Map

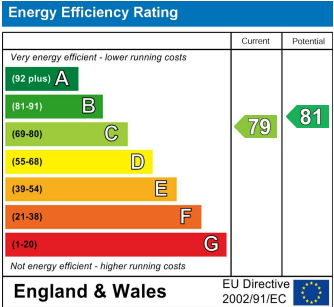




Floorplan



Energy Efficiency Graph



These particulars, whilst believed to be accurate are set out as a general outline only for guidance and do not constitute any part of an offer or contract. Intending purchasers should not rely on them as statements of representation of fact, but must satisfy themselves by inspection or otherwise as to their accuracy. No person in this firms employment has the authority to make or give any representation or warranty in respect of the property.